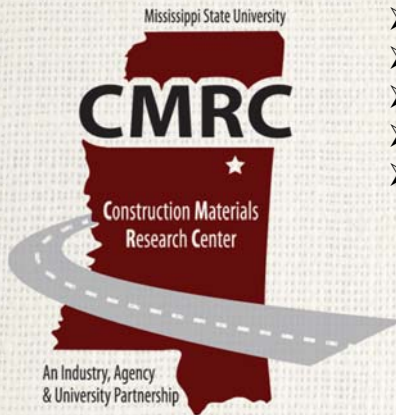


Contact Isaac L. Howard
For More Information
ilhoward@cee.msstate.edu

Construction Materials Research Center Projects and Impacts

PM-15-01 (July 2015)

<http://www.cee.msstate.edu/cmrc>

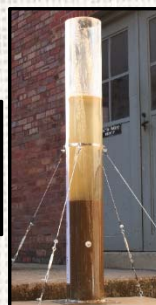


- A summary of projects and representative impacts of these projects is provided.
- Each photo shown is from a project performed in the last few years.
- Projects help meet societal needs while simultaneously educating students.
- Around 10 undergraduate and graduate students do research in a typical year.
- Five year average research output of 15 documents yearly (e.g. articles, reports).



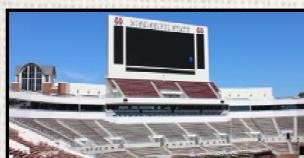
Example Impacts to Mississippi Department of Transportation (MDOT):

- Increased allowable usage of Reclaimed Asphalt Pavement (RAP) as seen in Special Provision 907-401-7.
- Acceptance of Type IL Portland-Limestone Cement (PLC) as seen in Special Provision 907-701-5.
- MDOT is considering statewide implementation of soil-cement protocols based on State Study 206.



Summary of Materials and Projects Studied in the Past Five Years (2010 to 2014):

Aggregates, Airfields, Asphalt Binders, Asphalt Binder Additives, Asphalt Emulsions, Asphalt Paving, Bridges & Storm Surge, Calcium Sulfoaluminate Cement, Chip Seals, Cold in Place Recycling, Concrete, Dewatering, Disaster Recovery, Dredging, Emergency Paving, Fibers, Fly Ash, Full Depth Reclamation, Geosynthetics, Geotextile Tubes, Ground Tire Rubber, Highways, Levees & Overtopping, Matting, Polymers, Portland Cement, Portland-Limestone Cement, Reclaimed Asphalt Pavement, Scrub Seals, Slag Cement, Soil-Cement, Warm Mixed Asphalt, Wood.



Isaac L. Howard
CMRC Director

Dennis D. Truax
CEE Department Head

Jason M. Keith
BCoE Dean



MISSISSIPPI STATE UNIVERSITY™
— JAMES WORTH —
BAGLEY
COLLEGE OF ENGINEERING