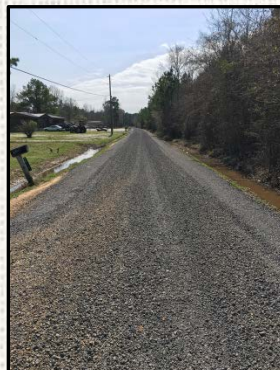
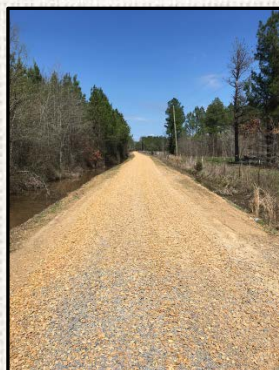
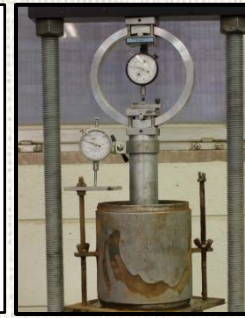
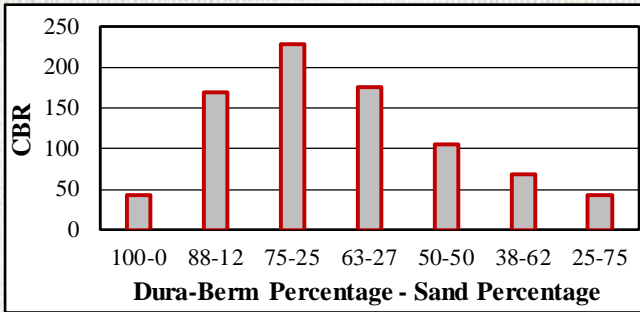
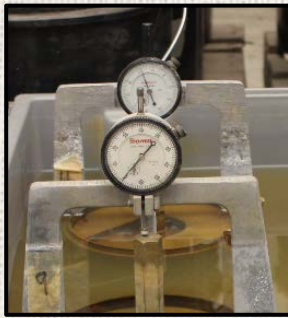


Summary:

Data collected over the past couple of years has shown steel slag to be a versatile material for a variety of unpaved applications including low volume roads, temporary construction access and laydown yards, driveways, parking lots, and similar. Dura-Berm (1.5 in x 0) is a product available in the Mississippi market that has been and continues to be evaluated by the Construction Materials Research Center (CMRC). The photos and data below highlight some of the favorable characteristics of Dura-Berm for unpaved applications that have been observed to date. The plot in the middle of the page is not associated with any actual project, but shows the favorable properties that can be achieved when Dura-Berm is blended with readily available sandy material. The following link is to a CMRC workshop attended by 75 people where a variety of steel slag content is documented, including more information for unpaved applications.

<https://www.cee.msstate.edu/wp-content/uploads/2019-Steel-Slag-Workshop-Report-FINAL-compressed.pdf>



FOR MORE INFORMATION

Isaac L. Howard is the CMRC Director (<https://www.cee.msstate.edu/cmrc/>)

Travis Zimmer is the slag sales coordinator for Columbus, MS, Memphis Mill and Charleston Mill Service for Edw C. Levy (tzimmer@edwclevy.net)



EAF SLAG IS NOT TO BE USED IN ANY CONFINED APPLICATIONS WITHOUT PROPER TESTING AND ASSESSMENT- THIS FLYER IS FOR GENERAL INFORMATION - USERS BEAR ALL RESPONSIBILITY

An Industry, Agency
& University Partnership